

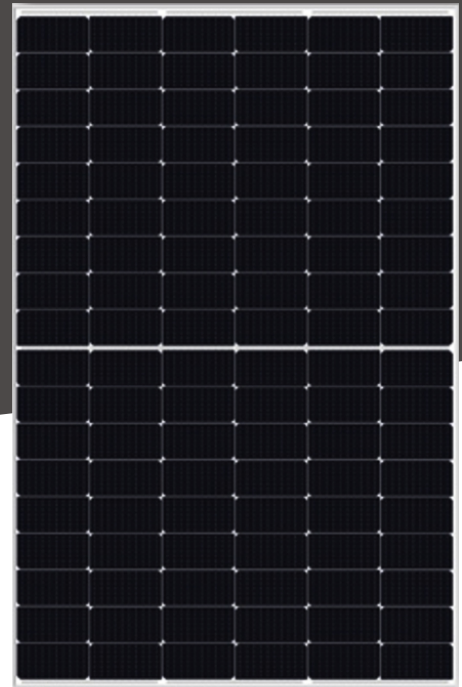
SOL212

POWER RANGE

390W~410W

CELL SIZE

182*91mm

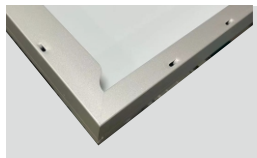


JUNCTION BOX

Waterproof protection grade: IP67/IP68
Safety Level: Class II
Maximum System Voltage: 1500V
outstanding waterproof level ·
Effectively resist harsh environments



10BB



Frame

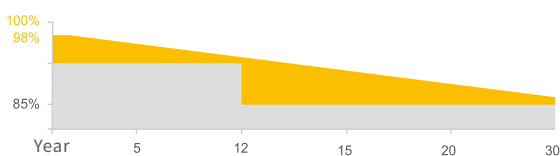
Strong machinical load
resistance up to 5400Pa
Anodic oxidation layer resistant to
chemical corrosion available
in silver and black

QUALIFICATIONS AND CERTIFICATES



· IEC61215 / · IEC61730

WARRANTY



12 YEARS Guarantee on product material and workmanship

30 YEARS Linear Power output warranty



Half-cut Technology

New circuit design, lower internal current and lower internal resistance loss



Significantly avoiding heat spot

The unique circuit design to reduce the temperature of heat spot significantly, so that to reduce the power loss and then increase the output of modules.



Lower cost

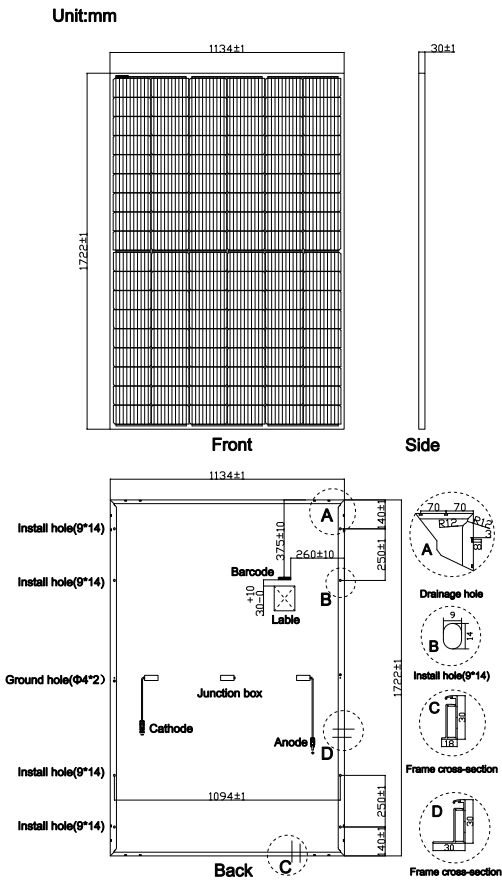
Increasing power generation can reduce the cost per kilowatt-hour



Excellent performance of PID resistance

The performance of PID resistance (Potential Induced Degradation) passed the standard of TUV Nord.

PV DRAWINGS



ELECTRICAL DATA (STC)

Model Type	ODA390-27V-MH	ODA395-27V-MH	ODA400-27V-MH	ODA405-27V-MH	ODA410-27V-MH
Peak Power(Pmax)	390.00	395.00	400.00	405.00	410.00
Maximum Power Voltage(Vmp)	30.82	30.98	31.14	31.30	31.46
Maximum Power Current(Imp)	12.66	12.76	12.85	12.94	13.04
Open Circuit Voltage(Voc)	36.65±3%	36.85±3%	37.05±3%	37.25±3%	37.45±3%
Short Circuit Current(Isc)	13.49±3%	13.58±3%	13.67±3%	13.76±3%	13.85±3%
Module Efficiency(%)	19.97	20.23	20.48	20.74	21.00

* STC: irradiance 1000 W/m², AM 1.5, and cell temperature of 25°C

ELECTRICAL DATA (NOCT)

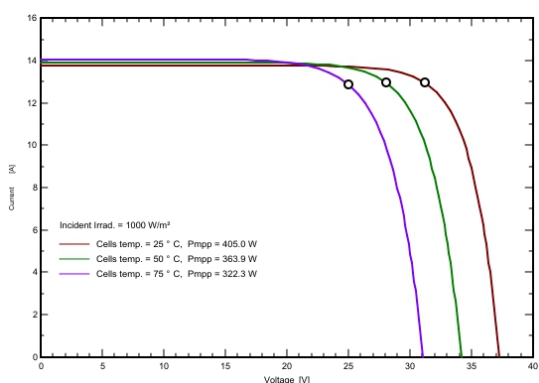
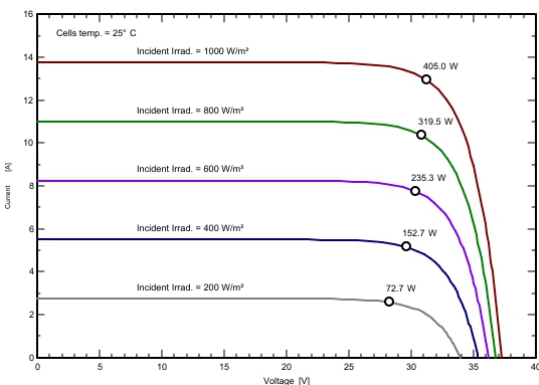
Model Type	ODA390-27V-MH	ODA395-27V-MH	ODA400-27V-MH	ODA405-27V-MH	ODA410-27V-MH
Peak Power(Pmax)	290.00	293.70	297.40	301.10	304.80
Maximum Power Voltage(Vmp)	28.56	28.72	28.88	29.04	29.20
Maximum Power Current(Imp)	10.16	10.23	10.30	10.37	10.44
Open Circuit Voltage(Voc)	34.33±3%	34.51±3%	34.69±3%	34.87±3%	35.05±3%
Short Circuit Current(Isc)	10.84±3%	10.92±3%	11.00±3%	11.08±3%	11.16±3%

* NOCT: irradiance 800 W/m², AM 1.5, ambient temperature 20°C, wind speed 1 m/s

TEMPERATURE & MAXIMUM RATING

Maximum System Voltage (V)	1500 V
Maximum Series Fuse Rating (A)	25 A
Power Tolerance	0~+3 W
Pmax Temperature Coefficients (W/°C)	-0.350 %/°C
Voc Temperature Coefficients (V/°C)	-0.285 %/°C
Isc Temperature Coefficients (A/°C)	+0.045 %/°C
NOCT Nominal Operating Cell Temperature (°C)	45±2 °C
Operating and Storage Temperature (°C)	-40~+85 °C

IV CURVE (405W)



MECHANICAL CHARACTERISRTICS

Cell Type	182*91 Mono
No. of Cells	108 (12*9)
Dimensions	1722*1134*30mm
Weight	21.50kg
Front Glass	3.2mm high transmission, low iron, tempered glass
Frame	Anodized Aluminium Alloy
Junction box	IP67/IP68 3diodes
Output cables	4mm ² cable 35cm (Inlcuding MC4 connector)
MaxWind Load/Snow Load	2400Pa/5400Pa

20FT container	6 Packages/222pcs
40HQ container	26 Packages/962pcs