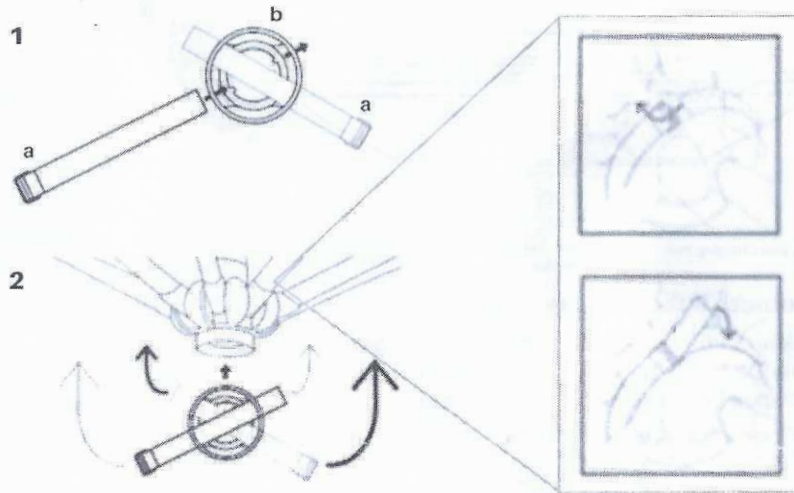


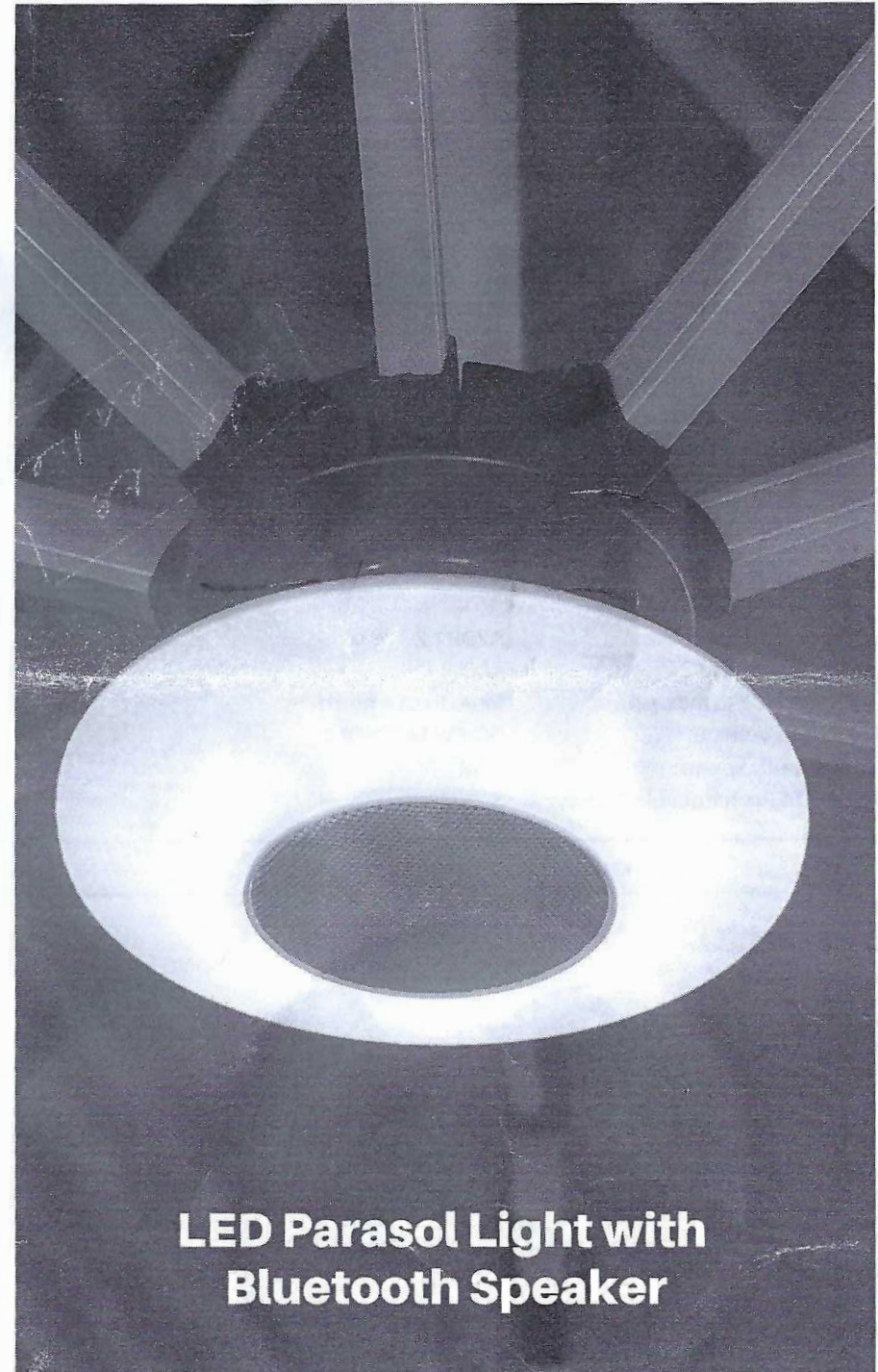
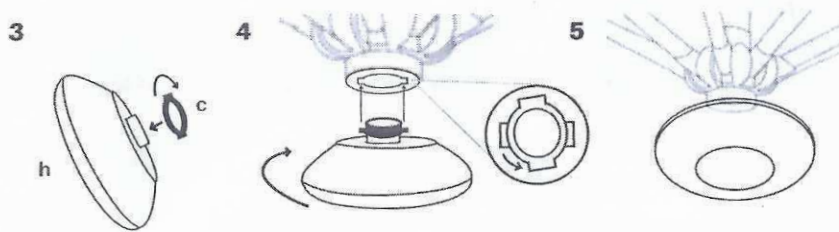
## Light Applications

1. Place it on a flat surface and use it directly.
2. Hang it on an umbrella or other application scenarios through parts.

## Installing The Light On The Umbrella



Note: Attach the lights to the short ribs of the umbrella with velcro straps.



**LED Parasol Light with  
Bluetooth Speaker**

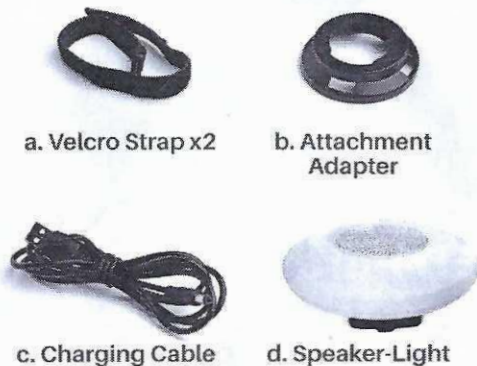
## WARNING!

- Do not use this unit for anything other than its intended use. Improper use can cause permanent damage to the device and/or injury.
- Use the device in dry conditions only and do not expose to any liquids.
- Do not expose the device to direct sunlight for extended periods.
- Do not disassemble, repair or modify this product by yourself.
- Exposure to high volume for a long time can cause impaired hearing, when playing music for a long time, please avoid using the volume too high.
- Keep the device away from sources of heat.
- If the device becomes hot, place in a cool and dry location until it has cooled.
- Do not leave this product unattended while connected to a power supply.
- Make sure the device is fully secured/tightened to any attachment pieces.
- If the device is to be used without attachments, it must be placed on a sound, even surface and free of vibrations.
- Keep this product out of reach of children.
- Keep free of dust, lint, hair.

## Specification

Bluetooth Protocols:	A2DP1.2
Speaker Output:	4Ω3W
Usage time at max. power:	More than 4 hours
Charge Voltage:	DC 5V/1A (USB)
Bluetooth Range:	10M
Built-In Rechargeable Battery:	3.7V/2500mAh

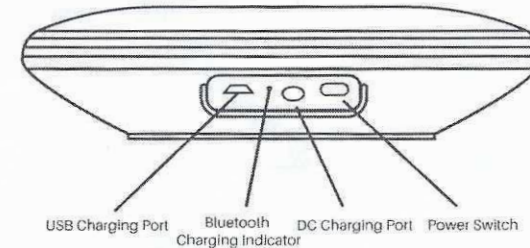
## Parts List



## Umbrella Light Charging

### Charging the Light-Speaker

Before using, the LED parasol light with Bluetooth speaker must be charged. The charging port on the device is DC5V 1.0A input. Plug the supplied cable into a USB-port charging adapter (not included) to charge the device. The charge indicator lights up in red while charging is in progress, and lights off upon completion of charging.



### Bluetooth Speaker Connection

1. After turn on the switch, the Bluetooth function automatically enters pairing mode for ten minutes. If it does not be paired within this period, please restart the device to activate Bluetooth function.
2. Open your Bluetooth settings on your phone, scan and select the device named "DFSS01".
3. When the Bluetooth connection is established, you hear the notification sound from the speaker and the activity of the Bluetooth indicator changes from flashing to lit. If the Bluetooth connection is not established, repeat above steps.

### Note

1. Bluetooth function will connect automatically if the device has been paired before.
2. The light can be paired with multiple devices, but can only play music from one paired device at a time.

### Lights Operation

1. After the device is turned on, tapping the surface of speaker to make light becoming dim. Re-tapping it, the light changes from dim to bright, then turns out super bright when you tap again.
2. Keep touching the surface, light changes from warm white light mode to RGB light mode. Each tapping triggers one color light, in total it includes 7 colors. On 8th tapping, the RGB light mode will play automatically. On 9th tapping, the RGB light changes with the rhythm of music which played on speaker.
3. Tapping the surface of speaker again to turn off the lighting function.